

**ALL-FILL**

**P H A R M A**



**AUGER FILLING TECHNOLOGY**



# PHARMA FILLING TECHNOLOGY

The pharmaceutical industry demands the highest standards of quality as defined by design, materials, workmanship, GMP, accuracy, usability, security and reliability. Since these same qualities have been the guiding principles since All-Fill was founded in 1969, it is no coincidence that this important sector accounts for an increasingly significant proportion of All-Fill's total production.

All-Fill is able to meet the widest range of customer requirements, from individual machines to complete turn-key lines, from fine fluffy sticky powders through to free-flowing granules, all with the option of fully integrated weight control systems. All-Fill support includes a full validation documentation package, with protocols and experienced personnel to assist with installation and operation qualifications.

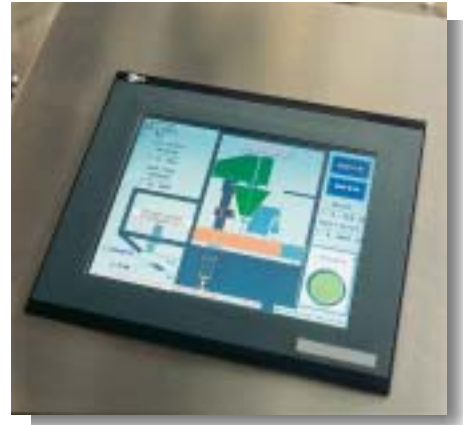
## SEMI-AUTO

Floor-standing pedestal and bench-top models are available, in volumetric and gravimetric forms, with all 316L stainless steel contact parts, no tools strip-down for cleaning and 304 stainless steel externals. All machines feature Plc control via monochrome or colour touch-screen panel.



Microfill unit for laboratory and production use. 10mg to 50g. With servo drive, colour touch-screen panel and integral work station.

User-friendly touch-screens provide access-protected on-screen selection of all variable parameters via super-clear full colour pictorals, photographs and graphics with memory for speed and simplicity of operation and set-up. Plc options include short and long-term production/weight statistics via printer or PC and fault diagnosis via modem.



Filling heads are supplied direct to end-users and machine builders for integration into vertical form-fill-and-seal, sachet and cartonning equipment. They also form the basis of our automatic in-line and high-speed rotary systems.



Integrated unscrambling filling and stoppering system in fully sealed glovebox enclosure for precise gravimetric filling of biological analysis samples into vials and small bottles.

## AUTOMATIC IN-LINE

### SINGLE HEAD

Supplied as standard with a lift mechanism for neck-entry dust-free filling of fine powders and vibration for settling of granular products. Conveyor bed and system frame GMP designed for ease of cleaning. Plc controlled (Siemens as standard) with large format full colour touch-screen HMI panel.

### DUAL HEAD

Twin head systems are available for doubling output volumetrically. These systems can also be configured with weigh cells beneath the second head for volumetric bulk fill with gravimetric top-up, or with intermediate weighing for higher outputs.

### MULTI HEAD

Bespoke and multi-head solutions are available, custom-designed to suit user requirements.



*Dry suspension antibiotics, 20g to 60g, into narrow-neck glass bottles at up to 30 per minute, with neck location for precise neck-entry lift.*

### DOUBLE-SHOT SYSTEMS

Separate dosing of the active product and carrier provide the opportunity to reduce batch validation costs dramatically by scaling down the process plant required to produce the active.

Advances in weigh-balance technology permit double-shot filling with 100% nett weight validation, offering significant capital expenditure and up to 90% batch validation cost savings. Choose from two head, four head or eight head configurations.



*4 head filler for oral suspension antibiotics, the 1<sup>st</sup> twin head filling the carrier, the 2<sup>nd</sup> twin filling the active. Features: servo worm-scroll bottle transport, neck-entry filling, 100% weight validation/reject, vacuum conveyor hopper feeds, balcony design, touch-screen control.*

## ROTARY SYSTEMS

Pharmaceutical powders with different characteristics require different engineering solutions. All-Fill have the widest range of high speed, high accuracy rotary macro-dosing equipment available.

### INDEXING MOTION

For fine, sticky, dusty powders, one to four heads with direct neck-entry filling, with optional tare-and-gross weighing and nett weight calculation for reject.

### CONTINUOUS MOTION ROTARY, INTERMITTENT DOSING

With servo drive to the auger, particularly suitable for high speed filling of smaller doses (1g to 5g) of sticky, non-free flowing powders, dosing intermittently into transfer funnels with transfer assist.

### CONTINUOUS MOTION ROTARY, CONTINUOUS DOSING



*12 Pocket Continuous Motion Rotary with continuous dosing, filling, 6g to 30g dry suspension antibiotics into glass bottles at 8000 bottles per hour.*

For highest speed, continuous filling with a knife-edge plate dividing the continuous powder flow equally into the transfer funnels. Particularly suitable for larger doses, 10g to 100g. Seals between the filling nozzle (auger/funnel) and knife-edge plate keep bottles, machine and environment dust-free

### 100% NETT WEIGHT VALIDATION

Floor-mounted high-resolution digital balances integrated within the rotary filler base frame, one upstream/one downstream of the filling/transfer turret, provide 100% nett weight validation. Tare and gross weighing statically provides far higher accuracy than could be achieved with traditional dynamic checkweighers. Full integration guarantees mechanical registration, with faster response times, reduced line length and single panel set-up. The exit starwheel reject system operates in "positive accept" mode, diverting under/overweight bottles to a separate reject lane, with reject verification.'



## VALIDATION

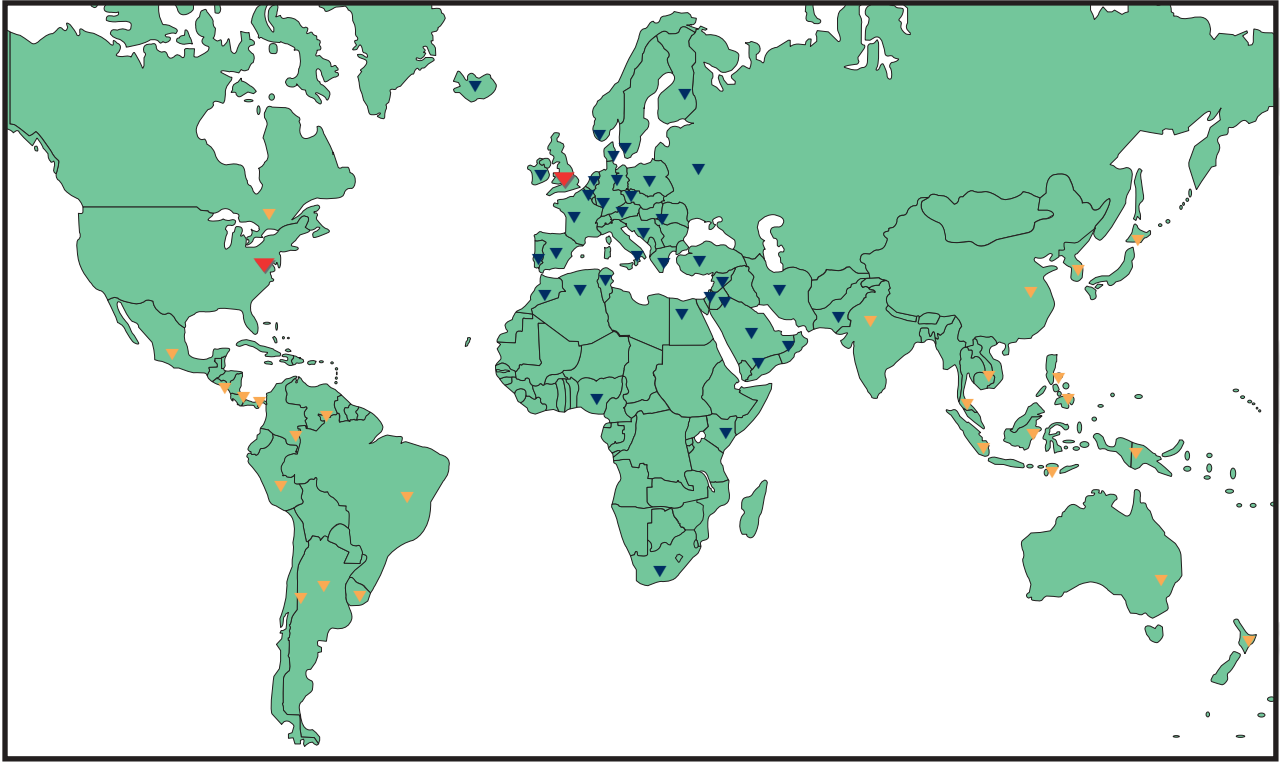
All-Fill are able to provide their pharmaceutical clients with a complete documentation package to facilitate pre-production validation and experienced support to assist with on-site validation.

The documentation package includes full process description, software ladder diagram, installation and maintenance instructions, mechanical and electrical drawings, pre-delivery testing protocols and installation/operation qualification protocols.



## TURN-KEY LINES

All-Fill offer their clients a single-source service for all items within the packaging line. Equipment is selected from manufacturers with specialist expertise, following detailed discussions with the end-user to establish current and future objectives and agree a detailed specification. Items such as bottle cleaners, bulk feed systems, metal detectors, check weighers, cappers and labellers can be integrated with All-Fill conveying and loading/buffer units to provide a professional turn-key solution precisely tailored to meet the client's needs.



ALL-FILL NETWORK WORLDWIDE

- ▼ Manufacturing bases.
- ▼ Countries served by ALL-FILL International Ltd.
- ▼ Countries served by ALL-FILL Inc.

With our sister company in Pennsylvania USA, All-Fill have become a leading supplier of macro-dosing systems to the pharmaceutical sector with sales and support organisations the world over. The two manufacturing operations have embraced the latest technologies and are ISO 9001 accredited for design, manufacture and after-sales support.

This wealth of experience and commitment to innovative engineering and quality make All-Fill the definitive source for pharmaceutical powder filling solutions.



ALL-FILL INTERNATIONAL LIMITED  
REGISTERED TO ISO 9001  
CERTIFICATE NO. A6246



**ALL - FILL INTERNATIONAL LIMITED**  
Unit 5 Gateshead Close • Sunderland Road  
Sandy • Bedfordshire • SG19 1RS • UK

tel: +44 (0) 1767 691100  
fax: +44 (0) 1767 681406  
email: [info@allfill.co.uk](mailto:info@allfill.co.uk)  
website: [www.allfill.co.uk](http://www.allfill.co.uk)